

JACK HANLEY GALLERY

June 24, 2008

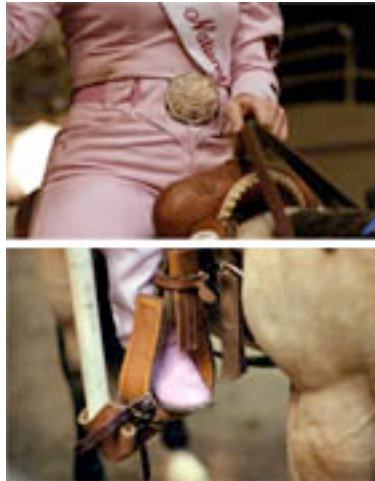
FOR IMMEDIATE RELEASE

Maria Antelman, Tamar Halpern

July 5 - August 8, 2008

Opening reception: Saturday, July 5^h, 6-9pm

In 395 Valencia Street



The Jack Hanley Gallery, San Francisco is pleased to present a group exhibition of artists **Maria Antelman** and **Tamar Halpern** in 395 Valencia and, in the 389 Valencia space, an exhibition of the work of **Michelle Blade**.

Maria Antelman creates videos that combine her own photographs with found soundtracks and closed-caption type texts in which, disparate socio-visual sources come together to reveal a fictional aspect of reality. "These realities offer fertile and diverse cultural eco systems, rich in visual and textual matter, which proliferates each in its own community and cultural niche." In her video *New Horizons*, which will be projected onto the gallery wall, she superimposes a question and answer session with a cryogenics "salesman", with video and sound recorded at a rodeo, resulting in an eerie study on mortality.

Tamar Halpern uses juxtaposition and layering in her work as well, however, in her case, it becomes more literal. In creating her large-scale photographs, she takes a number of steps away from the initial visual source through a series of digital processes. She modifies her computer-generated compositions until a small print is made, which is subsequently re-photographed and then scanned to create the final print. "Through the accumulation of these layered - yet highly distinct - processes and procedures, Halpern's works seem to elude, or negate, any easy aesthetic assimilation: the resultant 'images' seemingly suspended in a state of flux."

Maria Antelman was born in Athens, Greece in 1971 and studied Art History in Madrid, Spain. She lives and works in San Francisco and New York City.

Tamar Halpern lives and works in New York. Her work was recently shown in a solo exhibition at White Columns, New York.

395 valencia street
san francisco ca 94103
tel 415.522.1623
fax 415.522.1631
info@jackhanley.com
www.jackhanley.com

JACK HANLEY GALLERY

Michelle Blade

The Elliptical Good-Kind

July 5 - August 8, 2008

Opening reception: Saturday, July 5^h, 6-9pm

In 389 Valencia Street



In 389 Valencia, the Jack Hanley Gallery will present *The Elliptical Good-Kind*, an exhibit of large-scale paintings on *Dura-lar* by San Francisco-based artist **Michelle Blade**.

Using *Dura-lar* as her primary work surface, Blade paints in simultaneously gestural and restrained styles, highlighting the extreme variances between her subjects. The significant difference in size of the subjects, further distinguishes their relationship. Bringing to mind a Romantic sublimity, Blade accentuates the vastness of nature, while expressing a harmonious human connection to it.

Michelle Blade was born in Los Angeles, CA and received an MFA from CCA. Her work has been exhibited at the San Francisco Arts Commission Gallery, Parklife and Electric Works in San Francisco, at V1 Gallery in Copenhagen and at Space 1026 in Philadelphia.

For more information or images, please contact Ashley Bellouin or Ava Jancar at: (415)522-1623, or visit our website at: www.jackhanley.com.

395 valencia street
san francisco ca 94103
tel 415.522.1623
fax 415.522.1631
info@jackhanley.com
www.jackhanley.com